

AUTOMATIC AND TRANSFER SWITCH PANELS Catalogue



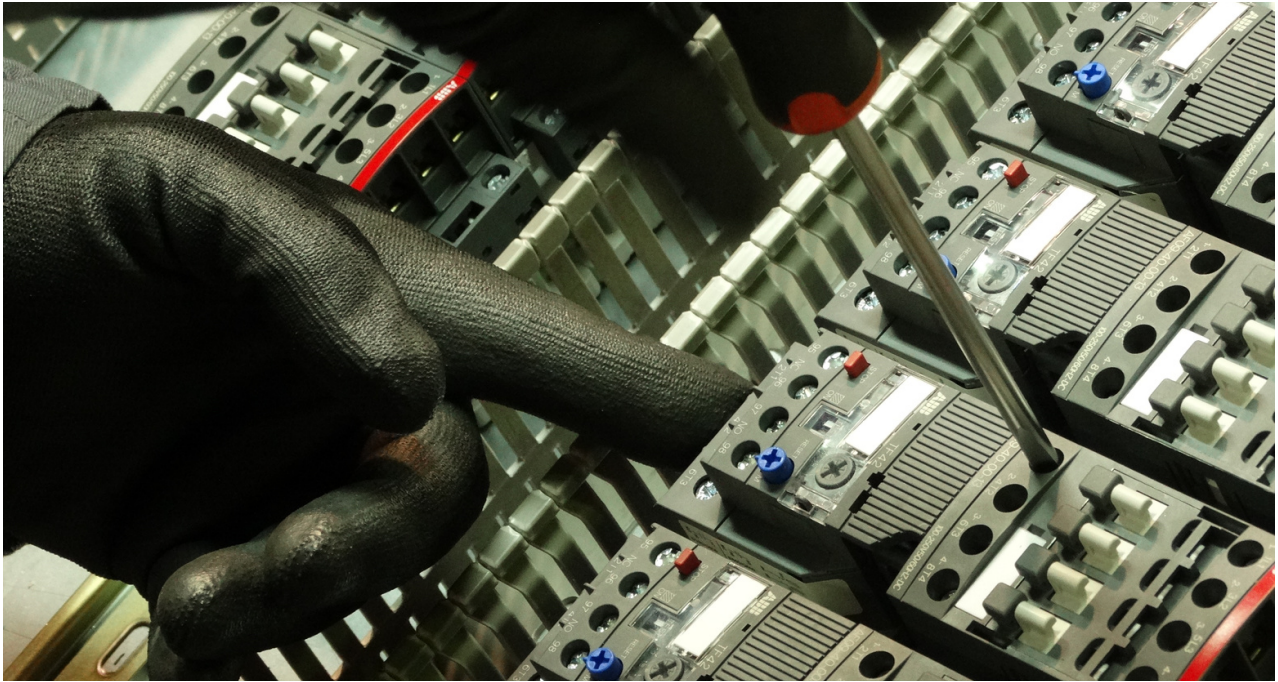
**DESIGNED AND
MANUFACTURED BY
GENSET COMPONENTS**

All the engineering, design and manufacture processes are made in our facilities.



www.gensetcomponents.com

These data are for guidance only and may be changed by the manufacturer without prior notice. Genset Components reserves the right to make changes to the specification of such material. This document shall not form part of the contract for the purchase of goods.



Our products have Certificate of Electromagnetic Compatibility (UE/2014/30/Directive) and Low Voltage (UE/2014/35/Directive)



CONTENTS

- LTS** Load Transfer Switch Panels*
- ATS** Automatic Transfer Switch Panels
- AMF** Automatic Mains Failure Panels
- CU** Control Units
- ACC** Accesories

*Automatic switch or transfer between the mains and the generator set/power generation system.

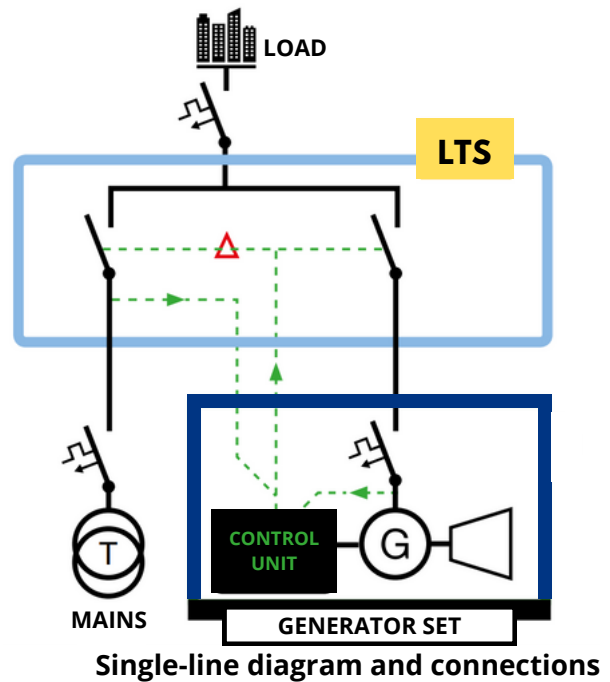
FUNCTIONALITY

It enables a change **in the power supply** (supplying the load of a facility) **between the mains and the generator set.**

The transfer switch is made up of two **contactors** or **motor-driven selectors** equipped with **MECHANICAL AND ELECTRICAL INTER-LOCK.**

The **operation is controlled from the control module** installed in the generator set.

This panel is suitable for all generators equipped with any **control unit with AMF (AUTOMATIC MAIN FAILURE)** function.

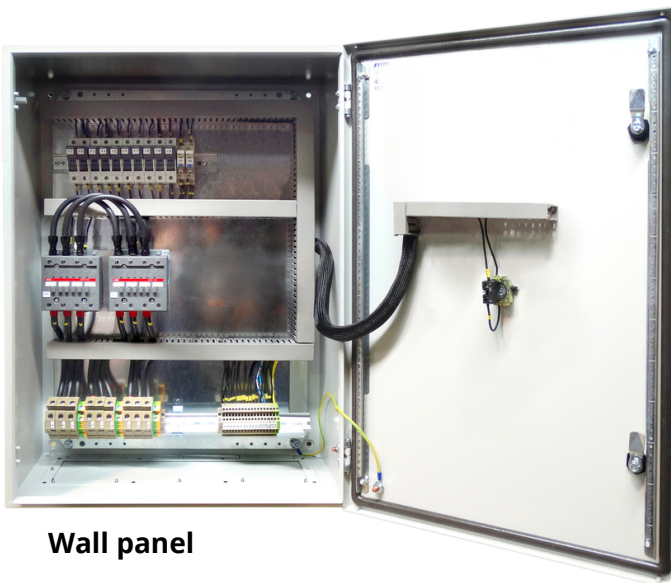


DESCRIPTION

Control panel offered in a metal cabinet with an IP-67 protection grade, containing the following elements:

- **Two contactors or a motor-driven selector**, equipped with mechanical and electrical interlocking, which prevents both from being closed at the same time, thus avoiding potential short circuits situations.
- **Protection fuses.**
- **Terminal block for control** and operation of the generator set.
- **Terminal block** for connection **of the generator set** input power cables, network input and load output.
- **Connection wiring** for all the electrical elements of the switchboard. Each wire is identified with its reference number at each end.
- **Emergency shutdown** pushbutton.
- **Front door** with key lock.
- **Bottom entrance** for wiring inlet.

Note. - All panels are protected against direct contact with live parts when the door is open.



Wall panel



Floor panel

SINGLE-PHASE

MODEL	AMP	POWER (kVA) PRP @ 1 x 120 V @ 1 x 230 V		TRANSFER SWITCH	BRAND	TYPE	CONTROL UNIT	POLES	DIMENSIONS (mm) HEIGHTxWIDTHxDEPTH	WEIGHT ASSEMBLY (kg)	ASSEMBLY
LTS-0050/2	50	6	11,5	C	ABB	AF09	-	2	400x400x210	15	W
LTS-0060/2	60	7,2	13,8	C	LOVATO	BF38-T4A230	-	2	400x400x210	15	W
LTS-0090/2	90	11	21	C	ABB	AF26	-	2	400x400x210	15	W
LTS-0120/2	120	14	28	C	TERASAKI	TC40A/4	-	2	400x400x210	15	W
LTS-0200/2	200	24	46	C	ABB	AF52	-	2	700x500x260	30	W
LTS-0250/2	250	30	58	C	ABB	AF80	-	2	700x500x260	30	W
LTS-0320/2	320	38	74	MCOS	SOCOMEK	ATySM3S	-	2	700x500x260	35	W
LTS-0520/2	520	62	120	C	TERASAKI	TC225A/4	-	2	800x600x300	55	W

TWO-PHASE or 3 x 230 V (W/O NEUTRAL)

MODEL	AMP	POWER (kVA) PRP @ 120/240 V @ 3 x 230 V		TRANSFER SWITCH	BRAND	TYPE	CONTROL UNIT	POLES	DIMENSIONS (mm) HEIGHTxWIDTHxDEPTH	WEIGHT ASSEMBLY (kg)	ASSEMBLY
LTS-0025/3	25	10	6	C	ABB	AF09	-	3	400x400x210	15	W
LTS-0030/3	30	12	7	C	ABB	AF16	-	3	400x400x210	15	W
LTS-0045/3	45	18	11	C	ABB	AF26	-	3	400x400x210	15	W
LTS-0060/3	60	24	14	C	LOVATO	BF38-T4A230	-	3	400x400x210	15	W
LTS-0100/3	100	40	24	C	ABB	AF52	-	3	700x500x260	30	W
LTS-0125/3	125	50	30	C	ABB	AF80	-	3	700x500x260	30	W
LTS-0160/3	160	64	38	MCOS	SOCOMEK	ATySM3S	-	3	700x500x260	35	W
LTS-0260/3	260	103	62	C	TERASAKI	TC225A/4	-	3	800x600x300	55	W
LTS-0400/3	400	159	96	MCOS	ABB	OTM400	-	3	1000x800x400	80	W
LTS-0630/3	630	251	151	MCOS	ABB	OTM630	-	3	1700x800x500	160	S
LTS-0800/3	800	318	192	MCOS	ABB	OTM800	-	3	1700x800x500	160	S
LTS-1250/3	1250	497	300	MCOS	ABB	OTM1250	-	3	1700x800x500	200	S
LTS-1600/3	1600	637	384	MCOS	ABB	OTM1600	-	3	2100x1000x600	330	S
LTS-2000/3	2000	796	480	MCOS	ABB	OTM2000	-	3	2100x1000x800	365	S
LTS-2500/3	2500	995	600	MCOS	ABB	OTM2500	-	3	2100x1000x800	365	S
LTS-3200/3	3200	1273	768	MCOS	ABB	OTM3200	-	3	2100x1000x800	380	S

THREE-PHASE

MODEL	AMP	POWER (kVA) PRP @ 3 x 208 V @ 3 x 400 V @ 3 x 480 V			TRANSFER SWITCH	BRAND	TYPE	C.U.	POLES	DIMENSIONS (mm) HEIGHTxWIDTHxDEPTH	WEIGHT ASSEMBLY (kg)	ASSEMBLY
LTS-0025/4	25	9	17	21	C	ABB	AF09	-	4	400x400x210	15	W
LTS-0030/4	30	11	21	25	C	ABB	AF16	-	4	400x400x210	15	W
LTS-0045/4	45	16	31	37	C	ABB	AF26	-	4	400x400x210	15	W
LTS-0060/4	60	22	42	50	C	LOVATO	BF38-T4A230	-	4	400x400x210	15	W
LTS-0100/4	100	36	69	83	C	ABB	AF52	-	4	700x500x260	30	W
LTS-0125/4	125	45	87	104	C	ABB	AF80	-	4	700x500x260	30	W
LTS-0160/4	160	58	111	133	MCOS	SOCOMEK	ATySM3S	-	4	700x500x260	35	W
LTS-0260/4	260	94	180	216	C	TERASAKI	TC225A/4	-	4	800x600x300	55	W
LTS-0400/4	400	144	277	332	MCOS	ABB	OTM400	-	4	1000x800x400	80	W
LTS-0630/4	630	227	436	523	MCOS	ABB	OTM630	-	4	1700x800x500	160	S
LTS-0800/4	800	288	554	664	MCOS	ABB	OTM800	-	4	1700x800x500	160	S
LTS-1250/4	1250	450	865	1038	MCOS	ABB	OTM1250	-	4	1700x800x500	200	S
LTS-1600/4	1600	576	1107	1328	MCOS	ABB	OTM1600	-	4	2100x1000x600	330	S
LTS-2000/4	2000	720	1384	1660	MCOS	ABB	OTM2000	-	4	2100x1000x800	365	S
LTS-2500/4	2500	900	1730	2075	MCOS	ABB	OTM2500	-	4	2100x1000x800	365	S
LTS-3200/4	3200	1152	2214	2656	MCOS	ABB	OTM3200	-	4	2100x1000x800	380	S

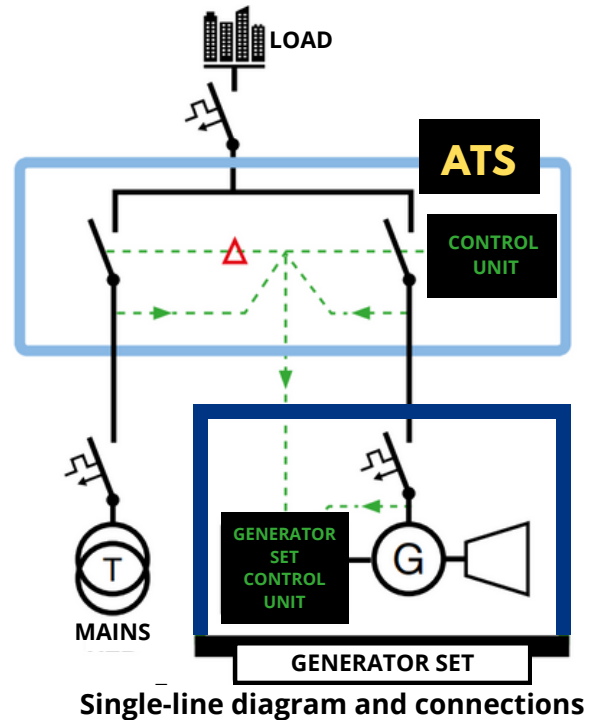
Transfer Switch: **C**: Contactors; **MCOS**: Motor-driven selector; **MCB**: Motor-driven circuit breaker.
 Assembly: **W**: Wall; **S**: Floor.

FUNCTIONALITY

This panel has a **control unit of choice** that detects when there is a mains failure and sends a start-up signal to the generator set control unit. Once started and ready, the panel's control unit operates to enable the **change of power supply** (supplying the load of a facility) **between the mains and the generator set** and vice versa when the **mains is restored**.

The transfer switch is formed by two **contactors or motor driven selectors** equipped with **MECHANICAL AND ELECTRICAL INTER-LOCK**.

This panel is applicable to any **generator set** equipped with **any control unit with remote control / start-up by signal feature**.



Wall panel



Wall panel

DESCRIPTION

Control panel offered in a metal cabinet with an IP-67 protection grade, containing the following elements:

- **Two contactors or a motor-driven selector**, equipped with mechanical and electrical interlocking, which prevents both from being closed at the same time, thus avoiding potential short circuits situations.
- **Protection fuses.**
- **Terminal block for control** and operation of the generator set.
- **Terminal block for connection of the generator set** input power cables, network input and load output.
- **Connection wiring** for all the electrical elements of the switchboard. Each wire is identified with its reference number at each end.
- **Battery charger.**
- **Transformers.**
- **Emergency shutdown** pushbutton.
- **Ignition key** (for control unit supply).
- **Control unit** to choose from among those available.
- **Front door** with key lock.
- **Bottom entrance** for wiring inlet.

SINGLE-PHASE

MODEL	AMP	POWER (kVA) PRP @ 1 x 120 V @ 1 x 230 V		TRANSFER SWITCH	BRAND	TYPE	CONTROL UNIT	POLES	DIMENSIONS (mm) HEIGHTxWIDTHxDEPTH	WEIGHT ASSEMBLY (kg)
ATS3-0050/2	50	6	11,5	C	ABB	AF09	*	2	500x400x210	15 W
ATS3-0060/2	60	7,2	13,8	C	LOVATO	BF38-T4A230	*	2	600x400x260	25 W
ATS3-0090/2	90	11	21	C	ABB	AF26	*	2	600x400x260	25 W
ATS3-0120/2	120	14	28	C	TERASAKI	TC40A/4	*	2	600x400x260	25 W
ATS3-0200/2	200	24	46	C	ABB	AF52	*	2	700x500x260	35 W
ATS3-0260/2	260	31	60	C	ABB	AF80	*	2	700x500x260	35 W
ATS3-0320/2	320	38	74	MCOS	SOCOMEK	ATySM3S	*	2	700x500x260	35 W
LTS-0520/2	520	62	120	C	TERASAKI	TC225A/4	*	2	1200x600x300	80 W

TWO-PHASE o 3 x 230 V (W/O NEUTRAL)

MODEL	AMP	POWER (kVA) PRP @ 120/240 V @ 3 x 230 V		TRANSFER SWITCH	BRAND	TYPE	CONTROL UNIT	POLES	DIMENSIONS (mm) HEIGHTxWIDTHxDEPTH	WEIGHT ASSEMBLY (kg)
ATS3-0025/3	25	10	6	C	ABB	AF09	*	3	500x400x210	20 W
ATS3-0030/3	30	12	7	C	ABB	AF16	*	3	600x400x260	25 W
ATS3-0045/3	45	18	11	C	ABB	AF26	*	3	600x400x260	25 W
ATS3-0060/3	60	24	14	C	LOVATO	BF38-T4A230	*	3	600x400x260	25 W
ATS3-0100/3	100	40	24	C	ABB	AF52	*	3	700x500x260	35 W
ATS3-0125/3	125	50	30	C	ABB	AF80	*	3	700x500x260	35 W
ATS3-0160/3	160	64	38	MCOS	SOCOMEK	ATySM3S	*	3	700x500x260	35 W
ATS3-0260/3	260	103	62	C	TERASAKI	TC225A/4	*	3	1200x600x300	80 W
ATS3-0400/3	400	159	96	MCOS	ABB	OTM400	*	3	1700x600x400	125 S
ATS3-0630/3	630	251	151	MCOS	ABB	OTM630	*	3	1700x800x500	175 S
ATS3-0800/3	800	318	192	MCOS	ABB	OTM800	*	3	1700x800x500	180 S
ATS3-1250/3	1250	497	300	MCOS	ABB	OTM1250	*	3	1700x800x500	210 S
ATS3-1600/3	1600	637	384	MCOS	ABB	OTM1600	*	3	2100x1000x600	335 S
ATS3-2000/3	2000	796	480	MCOS	ABB	OTM2000	*	3	2100x1000x800	370 S
ATS3-2500/3	2500	995	600	MCOS	ABB	OTM2500	*	3	2100x1000x800	370 S
ATS3-3200/3	3200	1273	768	MCOS	ABB	OTM3200	*	3	2100x1000x800	385 S

THREE-PHASE

MODEL	AMP	POWER (kVA) PRP @ 3 x 208 V @ 3 x 400 V @ 3 x 480 V			TRANSFER SWITCH	BRAND	TYPE	C.U.	POLES	DIMENSIONS (mm) HEIGHTxWIDTHxDEPTH	WEIGHT ASSEMBLY (kg)
ATS3-0025/4	25	9	17	21	C	ABB	AF09	*	4	500x400x210	20 W
ATS3-0030/4	30	11	21	25	C	ABB	AF16	*	4	600x400x260	25 W
ATS3-0045/4	45	16	31	37	C	ABB	AF26	*	4	600x400x260	25 W
ATS3-0060/4	60	22	42	50	C	LOVATO	BF38-T4A230	*	4	600x400x260	25 W
ATS3-0100/4	100	36	69	83	C	ABB	AF52	*	4	700x500x260	35 W
ATS3-0125/4	125	45	87	104	C	ABB	AF80	*	4	700x500x260	35 W
ATS3-0160/4	160	58	111	133	MCOS	SOCOMEK	ATySM3S	*	4	700x500x260	35 W
ATS3-0260/4	260	94	180	216	C	TERASAKI	TC225A/4	*	4	1200x600x300	80 W
ATS3-0400/4	400	144	277	332	MCOS	ABB	OTM400	*	4	1700x600x400	125 S
ATS3-0630/4	630	227	436	523	MCOS	ABB	OTM630	*	4	1700x800x500	175 S
ATS3-0800/4	800	288	554	664	MCOS	ABB	OTM800	*	4	1700x800x500	180 S
ATS3-1250/4	1250	450	865	1038	MCOS	ABB	OTM1250	*	4	1700x800x500	210 S
ATS3-1600/4	1600	576	1107	1328	MCOS	ABB	OTM1600	*	4	2100x1000x600	335 S
ATS3-2000/4	2000	720	1384	1660	MCOS	ABB	OTM2000	*	4	2100x1000x800	370 S
ATS3-2500/4	2500	900	1730	2075	MCOS	ABB	OTM2500	*	4	2100x1000x800	370 S
ATS3-3200/4	3200	1152	2214	2656	MCOS	ABB	OTM3200	*	4	2100x1000x800	385 S

Transfer Switch: **C**: Contactors; **MCOS**: Motor-driven selector; **MCB**: Motor-driven circuit breaker.
 Assembly: **W**: Wall; **S**: Floor.

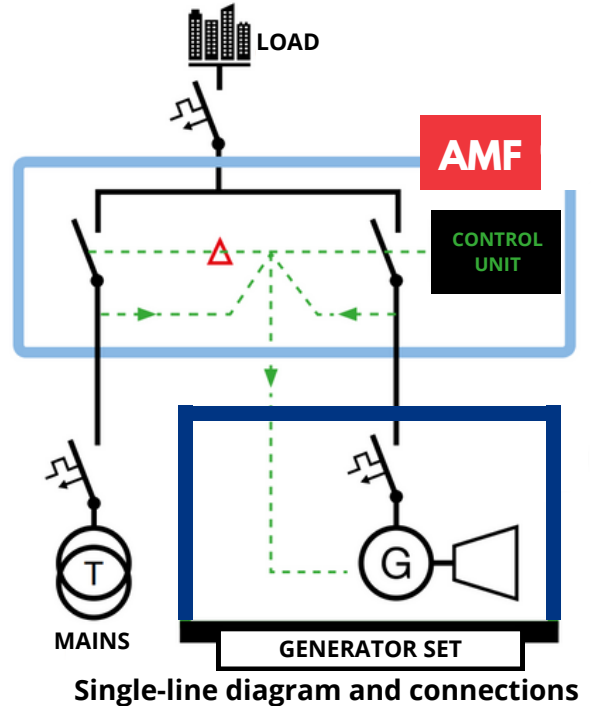
*See Page 10

FUNCTIONALITY

This panel has a **control unit of choice** that detects when a mains failure occurs and enables the **change of power supply** (supplying the load of a facility) **between the mains and the generator set** and vice versa when the mains is restored.

The transfer switch consists of two **contactors or motor-driven selectors** fitted with **MECHANICAL and ELECTRICAL INTERLOCK**.

In this case, the generator set does NOT need a control unit, this applies to any **predisposed genset or similiar**.



Cuadro mural



Cuadro en suelo

DESCRIPTION

Control panel offered in a metal cabinet with an IP-67 protection grade, containing the following elements:

- **Two contactors or a motor-driven selector**, equipped with mechanical and electrical interlocking, which prevents both from being closed at the same time, thus avoiding potential short circuits situations.
- **Protection fuses.**
- **Terminal block** for control and operation of the generator set.
- **Terminal block** for connection of the **generator set** input power cables, network input and load output.
- **Connection wiring** for all the electrical elements of the switchboard. Each wire is identified with its reference number at each end.
- **Battery charger.**
- **Input terminal block** for battery charger.
- **Transformers.**
- **Emergency shutdown** pushbutton.
- **Ignition key** (for control unit supply).
- **Alarm.**
- **Control unit to choose** from among those available.
- **Front door** with key locking.
- **Bottom entrance** for wiring inlet.

SINGLE-PHASE

MODEL	AMP	POWER (kVA) PRP @ 1 x 120 V @ 1 x 230 V		TRANSFER SWITCH	BRAND	TYPE	CONTROL UNIT	POLES	DIMENSIONS (mm) HEIGHTxWIDTHxDEPTH	WEIGHT ASSEMBLY (kg)	ASSEMBLY
AMF-0050/2	50	6	11,5	C	ABB	AF09	*	2	500x400x210	20	W
AMF-0060/2	60	7,2	13,8	C	LOVATO	BF38-T4A230	*	2	600x400x260	25	W
AMF-0090/2	90	11	21	C	ABB	AF26	*	2	600x400x260	25	W
AMF-0120/2	120	14	28	C	TERASAKI	TC40A/4	*	2	600x400x260	25	W
AMF-0200/2	200	24	46	C	ABB	AF52	*	2	700x500x260	35	W
AMF-0250/2	250	30	58	C	ABB	AF80	*	2	700x500x260	35	W
AMF-0320/2	320	38	74	MCOS	SOCOMEK	ATySM3S	*	2	700x500x260	35	W
AMF-0520/2	520	62	120	C	TERASAKI	TC225A/4	*	2	1200x600x300	80	W

TWO-PHASE 3 x 230 V (W/O NEUTRAL)

MODEL	AMP	POWER (kVA) PRP @ 120/240 V @ 3 x 230 V		TRANSFER SWITCH	BRAND	TYPE	CONTROL UNIT	POLES	DIMENSIONS (mm) HEIGHTxWIDTHxDEPTH	WEIGHT ASSEMBLY (kg)	ASSEMBLY
AMF-0025/3	25	10	6	C	ABB	AF09	*	3	500x400x210	20	W
AMF-0030/3	30	12	7	C	ABB	AF16	*	3	600x400x260	25	W
AMF-0045/3	45	18	11	C	ABB	AF26	*	3	600x400x260	25	W
AMF-0060/3	60	24	14	C	LOVATO	BF38-T4A230	*	3	600x400x260	25	W
AMF-0100/3	100	40	24	C	ABB	AF52	*	3	700x500x260	35	W
AMF-0125/3	125	50	30	C	ABB	AF80	*	3	700x500x260	35	W
AMF-0160/3	160	64	38	MCOS	SOCOMEK	ATySM3S	*	3	700x500x260	35	W
AMF-0260/3	260	103	62	C	TERASAKI	TC225A/4	*	3	1200x600x300	80	W
AMF-0400/3	400	159	96	MCOS	ABB	OTM400	*	3	1700x600x400	125	S
AMF-0630/3	630	251	151	MCOS	ABB	OTM630	*	3	1700x800x500	175	S
AMF-0800/3	800	318	192	MCOS	ABB	OTM800	*	3	1700x800x500	180	S
AMF-1250/3	1250	497	300	MCOS	ABB	OTM1250	*	3	1700x800x500	210	S
AMF-1600/3	1600	637	384	MCOS	ABB	OTM1600	*	3	2100x1000x600	335	S
AMF-2000/3	2000	796	480	MCOS	ABB	OTM2000	*	3	2100x1000x800	370	S
AMF-2500/3	2500	995	600	MCOS	ABB	OTM2500	*	3	2100x1000x800	370	S
AMF-3200/3	3200	1273	768	MCOS	ABB	OTM3200	*	3	2100x1000x800	385	S

THREE-PHASE

MODEL	AMP	POWER (kVA) PRP @ 3 x 208 V @ 3 x 400 V @ 3 x 480 V			TRANSFER SWITCH	BRAND	TYPE	C.U.	POLES	DIMENSIONS (mm) HEIGHTxWIDTHxDEPTH	WEIGHT ASSEMBLY (kg)	ASSEMBLY
AMF-0025/4	25	9	17	21	C	ABB	AF09	*	4	500x400x210	20	W
AMF-0030/4	30	11	21	25	C	ABB	AF16	*	4	600x400x260	25	W
AMF-0045/4	45	16	31	37	C	ABB	AF26	*	4	600x400x260	25	W
AMF-0060/4	60	22	42	50	C	LOVATO	BF38-T4A230	*	4	600x400x260	25	W
AMF-0100/4	100	36	69	83	C	ABB	AF52	*	4	700x500x260	35	W
AMF-0125/4	125	45	87	104	C	ABB	AF80	*	4	700x500x260	35	W
AMF-0160/4	160	58	111	133	MCOS	SOCOMEK	ATySM3S	*	4	700x500x260	35	W
AMF-0260/4	260	94	180	216	C	TERASAKI	TC225A/4	*	4	1200x600x300	80	W
AMF-0400/4	400	144	277	332	MCOS	ABB	OTM400	*	4	1700x600x400	125	S
AMF-0630/4	630	227	436	523	MCOS	ABB	OTM630	*	4	1700x800x500	175	S
AMF-0800/4	800	288	554	664	MCOS	ABB	OTM800	*	4	1700x800x500	180	S
AMF-1250/4	1250	450	865	1038	MCOS	ABB	OTM1250	*	4	1700x800x500	210	S
AMF-1600/4	1600	576	1107	1328	MCOS	ABB	OTM1600	*	4	2100x1000x600	335	S
AMF-2000/4	2000	720	1384	1660	MCOS	ABB	OTM2000	*	4	2100x1000x800	370	S
AMF-2500/4	2500	900	1730	2075	MCOS	ABB	OTM2500	*	4	2100x1000x800	370	S
AMF-3200/4	3200	1152	2214	2656	MCOS	ABB	OTM3200	*	4	2100x1000x800	385	S

Transfer Switch: **C**: Contactors; **MCOS**: Motor-driven selector; **MCB**: Motor-driven circuit breaker.
 Assembly: **W**: Wall; **S**: Floor.

*See Page 11

CHOOSE THE BEST CONTROL UNIT FOR YOU

We configure you panel with any of these control unit of your choice:



DSE 334

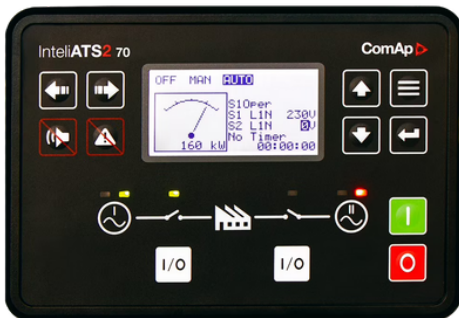
The DSE334 is an Automatic Transfer Switch Controller. The DSE334 will monitor the voltage and frequency of the incoming AC supply from two different sources, which could be from both generator or mains (utility), or a combination of both. The module will monitor S1 source 1) and in the event of a failure will issue a start command to S2 (source 2). Once S2 is available and producing an output within limits, the module will control the transfer device and switch the load from S1 to S2. Once the S1 supply returns to within limits, the module will command a load return to S1 and shut down S2.



DEIF AGC 150 ATS

Ideal for emergency power applications with any power source, the AGC 150 ATS is a robust, flexible, and user-friendly ATS control solution.

It can operate up to three breakers.



InteliATS2 70

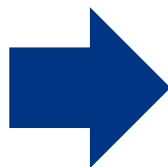
InteliATS2 70 is an Automatic Transfer Switch (ATS) controller for easy and fast switching between two independent power sources.

The InteliATS2 70 is designed with high-level security features, and it is easy to use and configure using ComAp's InteliConfig configuration tool.

Do you need an advanced version? Ask us, we will try to help you.



DSE 334



DSE 335

NOTE: Changes depending on availability or delivery times.



DSE 7320 MKII

The DSE7320 MKII is a powerful, new generation Auto Mains (Utility) Failure genset control module with a highly sophisticated level of new features and functions, presented in the usual DSE user-friendly format.

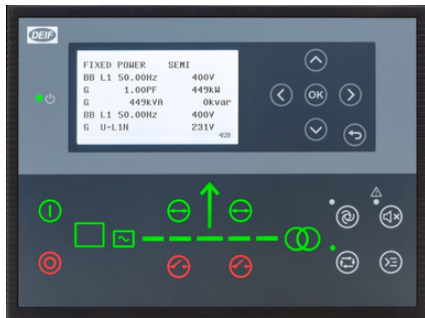
Suitable for a wide variety of single, diesel or gas Gen-set applications.



DSE 6120 MKIII

El DSE6120 MKIII monitoriza un amplio número de parámetros del motor, el módulo mostrará advertencias, apagado e información del estado del motor en la pantalla LCD retroiluminada, LEDs iluminados y PC remoto.

The module is compatible with electronic (CAN) and non-electronic (magnetic pick-up/alternator sensing) engines and offers an extensive number of flexible inputs, outputs and extensive engine protections so the system can be easily adapted to meet the most demanding industry requirements.



DEIF AGC 150 STAND ALONE

The AGC 150 Generator - Stand alone controller for controlling non synchronising applications with all the necessary functions for genset protection.

It stands out for its reliability and operator-friendliness.



Intelilite 4 AMF 25

Intelilite 4 AMF 25 an advanced single gen-set controller for stand-by and prime power applications. Intuitive, flexible, easy to install and use.

It offers multiple configuration options to create the best solution for controlling and monitoring your gen-sets both on-site and remotely.

BATTERY CHARGERS

If you need to include a battery charger in your panel, you can choose between these two options from Deep Sea Electronics (DSE):



DSE 9150 12V 3A

It keeps batteries charged to their maximum capacity at all times. It is designed for permanent battery connection and can be DIN rail or chassis mounted. The charger includes a normal or overload condition LED indicator on the front to assist with status identification, operates during cranking and running and accepts multiple AC voltage connections.



DSE BC2405 24V 5A

The DSEBC1205 is designed to be permanently connected to a battery, to ensure it maintains a full charge. The charger includes LED indicators on the front that show when there is no battery connected and if a fault condition is present.





MORE INFO: info@gensetcomponents.com



GENSET COMPONENTS

GENSET COMPONENTS S.L.

Autovía de Andalucía, Km. 318
23740 Andújar - Jaén - Spain
Tlfn. +34 689 001 650

www.gensetcomponents.com

These data are for guidance only and may be changed by the manufacturer without prior notice. Genset Components reserves the right to make changes to the specification of such material. This document shall not form part of the contract for the purchase of goods.